

Windows NT-Based SLA File Preparation Software— Powerful, Familiar and Efficient

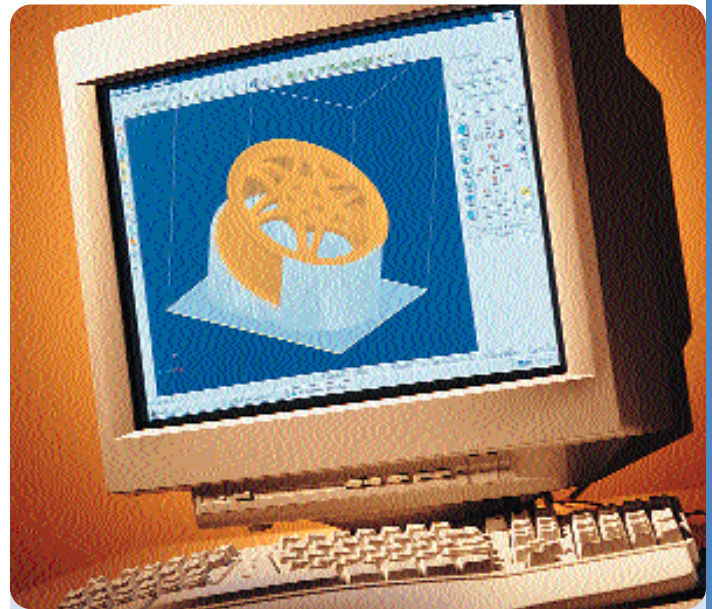
Increase your productivity with 3D Lightyear—Windows NT-based build file preparation software for 3D Systems' stereolithography (SLA) equipment.

Powerful part setup utilities are integrated into a single Windows interface. Both expert and novice users will appreciate 3D Lightyear's power and ease-of-use. 3D Lightyear fully exploits the power of the Windows NT operating system, delivering functionality that extends well beyond the capabilities of Unix-based Maestro. Year 2000 compliant, 3D Lightyear will ensure your productivity into the millennium.

Cut SLA build preparation and slice times by as much as half. Repair damaged .stl files up to 150 times faster. Produce build files that are up to 70% smaller for much faster file transfers to maximize the productivity of your SLA.

Maximize your productivity. Leverage your investment. 3D Lightyear is free with new machine purchases or to those on software maintenance contracts.* Couple that with inexpensive NT workstations and unlimited licensing within your organization and you have a powerful tool.

Upgrade to 3D Lightyear today.



“Appropriately named, 3D Lightyear software is light years ahead of its predecessor, Maestro. Experienced SLA users will appreciate Lightyear's consolidation of powerful part setup utilities into a single, easy to navigate interface. New users will appreciate Lightyear's intuitive icons and in-depth help utilities.”

With 3D Lightyear, SLA build preparation time is literally cut in half. What's more, the new slice algorithm further reduces time by 50% or more.”

**—Steve Deak
Manager of Rapid Prototyping, Hasbro, Inc.**

3D Lightyear is an essential tool for:

Windows NT-based networks

High volume operations

Novice and experienced users

Cost-efficient operations

Y2K compliance

*Certain conditions may apply. Call for details.

3
SOLID
SYSTEMS IMAGING